



The Beginner's Guide to

FALSE LASHES

**EDIN LAWSON
LICENSED ESTHETICIAN**

Table of **CONTENTS**

01

EASY STEP-BY-STEP GUIDE TO APPLYING FALSE LASHES

In just 5 simple steps you'll be applying your false lashes like a pro! False lashes can be intimidating to beginners but follow these steps and tips to level up your lash game!

02

PRO TIPS FROM BEAUTY EXPERTS

This guide also provides some expert tips and tricks from beauty pros who help you get started on freshening up your lash techniques.

03

RESOURCES

Check out the YouTube videos of beauty creators providing step-by-step instructions on how to get the best false lash application. Links provided are products I have used that are great for beginner lash wearers.

04

LASH INSPIRATION



HEY, I'M EDIN

I'm a licensed esthetician and false lash wearer

This guide is a simple step-by-step explanation with videos to help you achieve a beautiful and bold look when wearing false lashes.

Artificial lashes are an easy way to add length, fullness, and drama to any makeup application. The false lashes in this guide we are referring to are band or strip lashes. They come in a variety of sizes and colors, ranging from human hair, animal hair, or synthetic fibers.

Edin, xoxo

LET'S DO IT!



The Beginner's Guide to **FALSE LASHES**

01

APPLY EYELINER

Apply eyeliner to your upper lash line to properly conceal the base of the lashes. Before eyeliner, you can prep your natural lashes with mascara if preferred.

02

REMOVE LASH FROM TRAY

Using a pair of tweezers, gently lift the lash from the tray and either lay on flat surface or back onto tray- they can quickly get lost if not careful!

03

MEASURE & TRIM

To measure the false lash, start with the inner corner of your eye resting the false lash on top of your natural lash line. Cut any excess from the outside end of the false lash.

04

APPLY LASH GLUE

Holding the false lash with tweezers, start by applying a thin layer of lash glue on the length of the lash- too much glue will cause a longer drying time. Wait 30 seconds or until the glue feels tacky.

05

APPLY LASH & FILL IN ANY GAPS

Application should start at the inner corner of the eye laying false lash on top of the natural lash line. Fill in any gaps by applying more eyeliner. Apply mascara to your natural lashes. Lastly, using tweezers or fingers carefully press the false and your natural lash together.

#LASHGODDESS

#LASHENVY

#LASHGOALS

#LASHLOVE

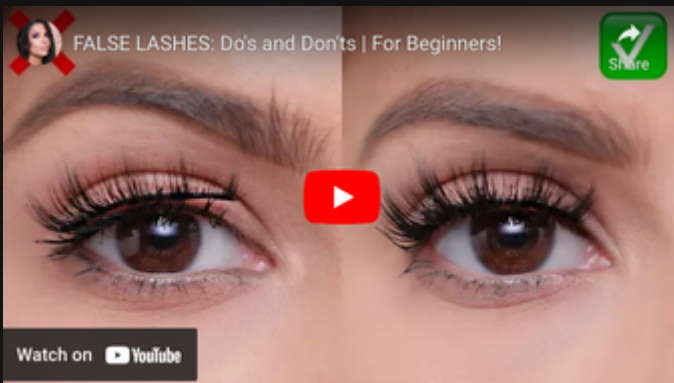
Videos

Links



<https://www.kissusa.com/products/my-lash-but-better-no-filters>

https://www.amazon.com/Amazon-Basics-Eyebrow-Tweezers-2-Pack/dp/B09VPM1F3Q/ref=sr_1_1_ffob_sspa?keywords=tweezers&qid=1706552746&sr=8-1-spons&sp_csd=d2lkZ2V0TmFtZT1zcF9hdGY&psc=1



<https://www.kissusa.com/collections/lash-glue-adhesive/products/kiss-ever-ez-latex-black>

OVE.

#LASHGODDESS

#LASHENVY

#LASHGOALS

#LASHLOVE

#LASHGODDESS

Inspirational
LASH AESTHETICS

